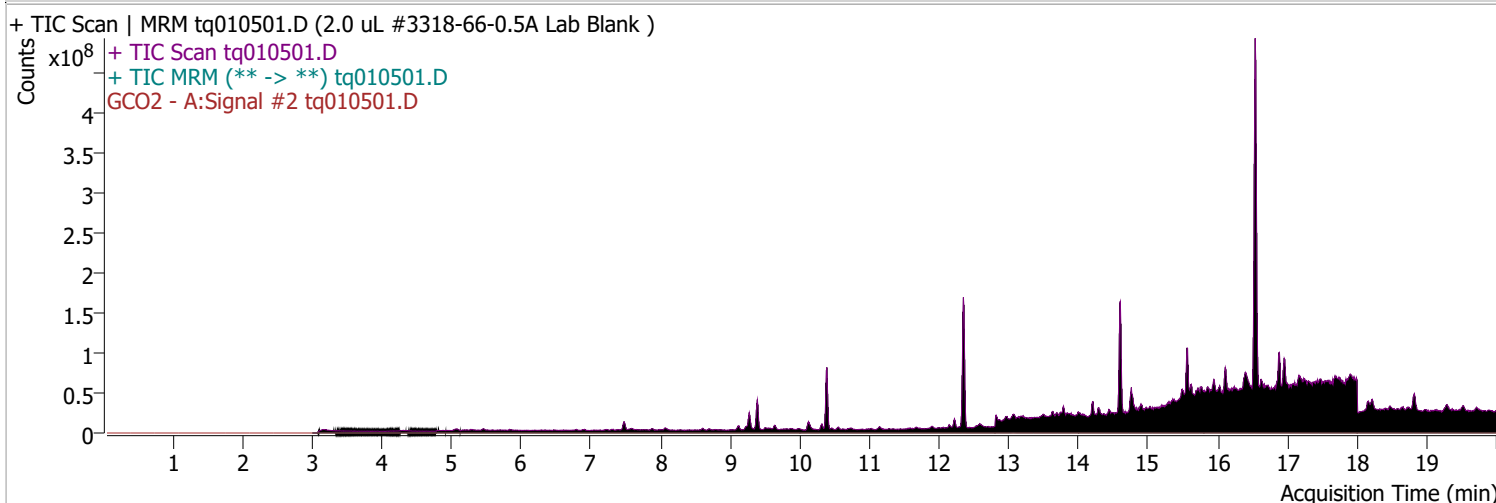
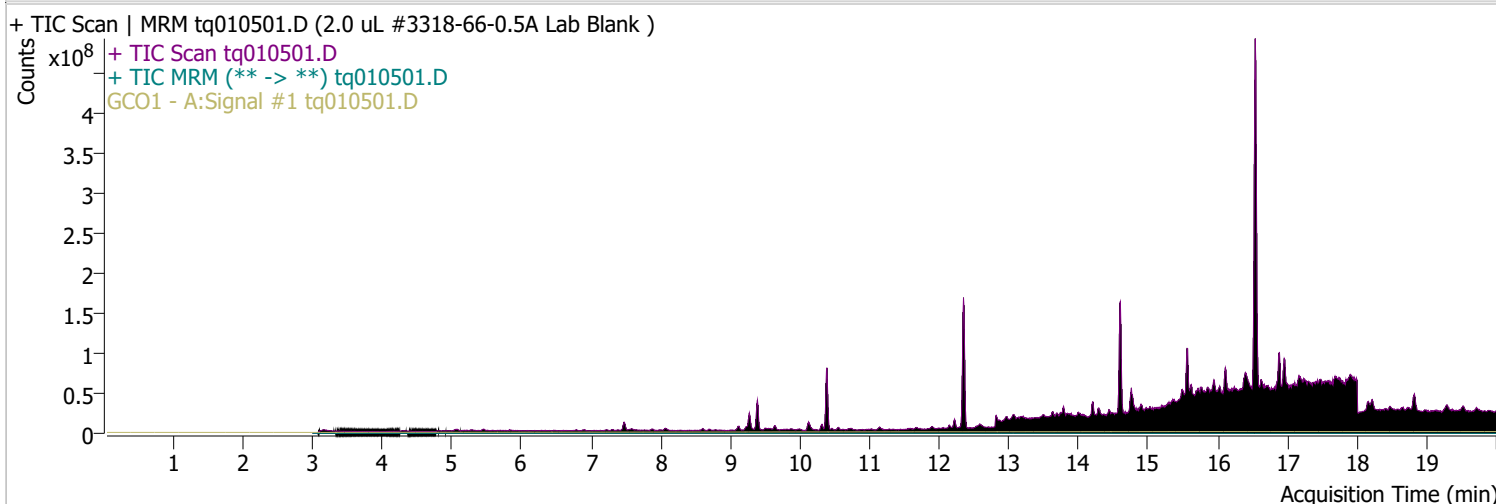
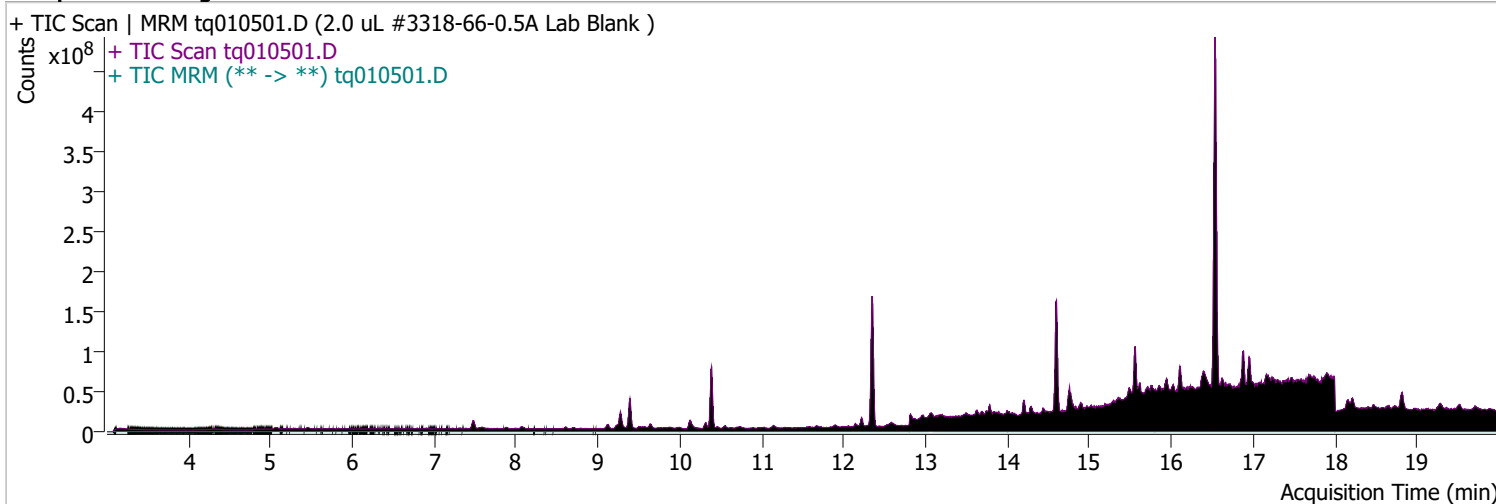


Quantitative Analysis Sample Report

Batch Path	D:\MassHunter\GCMS\1\data\05jan23\QuantResults\05jan23.batch.bin		
Analysis Time	1/11/2023 10:04 AM	Analyst Name	TAI\us32_usr_ins22923
Report Time	1/18/2023 2:30:09 PM	Reporter Name	TAI\us32_usr_ins22923
Last Calib Update	1/3/2023 2:39 PM	Batch State	Processed
Quant Batch Version	10.1	Quant Report Version	10.1
Acq. Time	1/5/2023 7:52 AM	Data File	tq010501.D
Sample Type	Sample	Sample Name	2.0 uL #3318-66-0.5A Lab Blank
Dilution	1	Acq. Method	tq22m1227

Sample Chromatogram

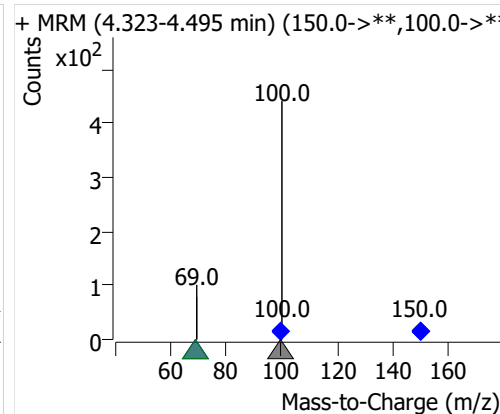
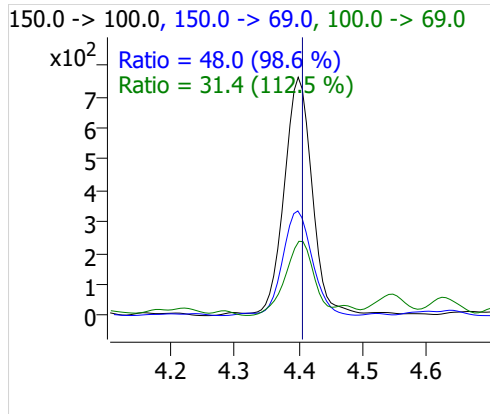
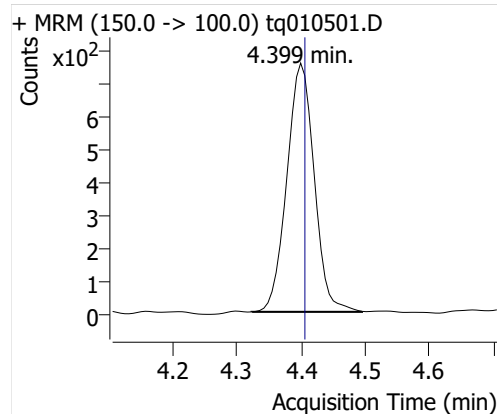


Compound	ISTD	RT	Resp.	ISTD Resp.	Resp. Ratio	Final Conc	Units
PFBA	6:2 FTOH-C13	4.399	2239	54609	0.0410	0.0122	ng

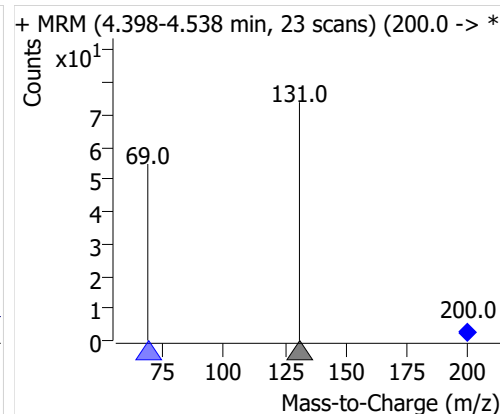
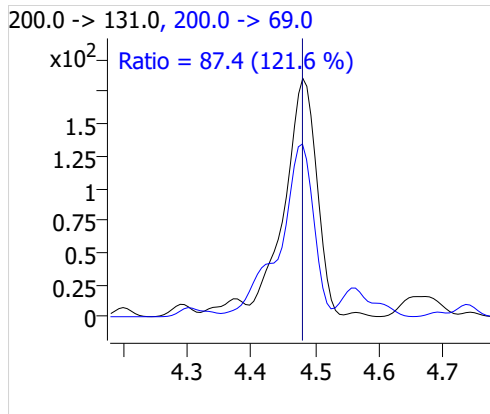
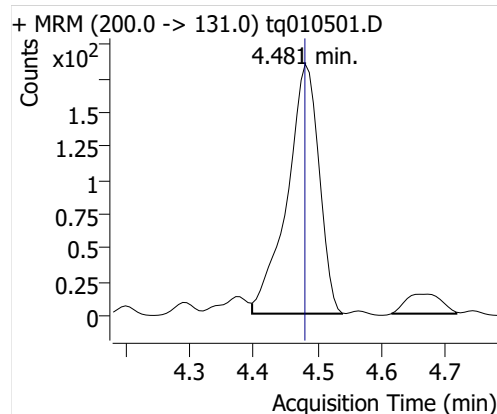
Quantitative Analysis Sample Report

Compound	ISTD	RT	Resp.	ISTD Resp.	Resp. Ratio	Final Conc	Units
PFPeA	6:2 FTOH-C13	4.481	637	54609	0.0117	0.0039	ng
PFHxA	6:2 FTOH-C13	4.645	383	54609	0.0070	0.0051	ng
PFHpA	6:2 FTOH-C13	4.906	146	54609	0.0027	0.0028	ng
PFOA	6:2 FTOH-C13	5.334	674	54609	0.0124	0.0205	ng

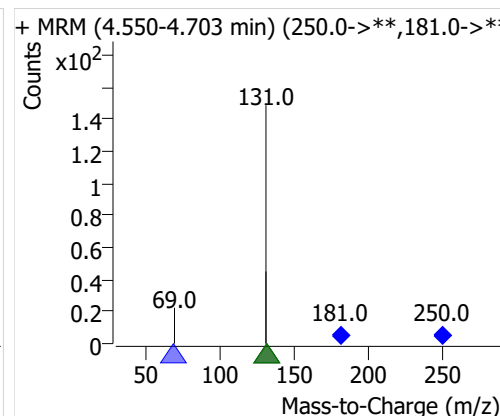
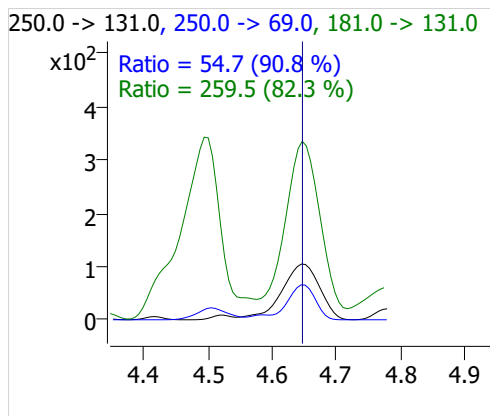
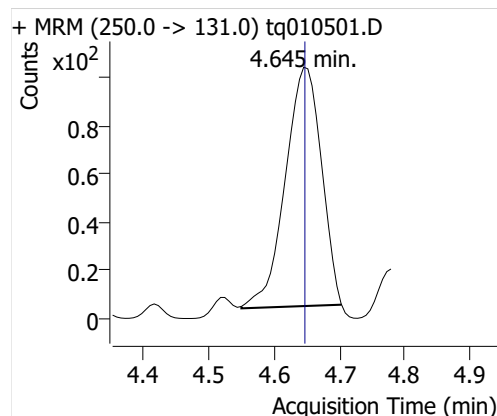
PFBA



PFPeA

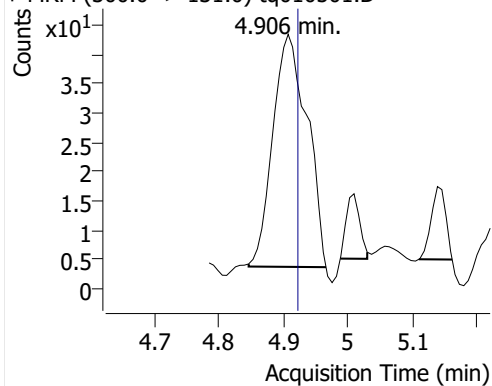


PFHxA

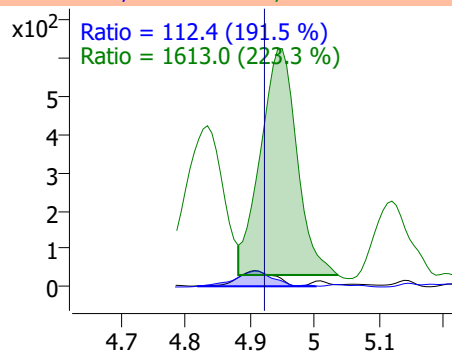


PFHpA

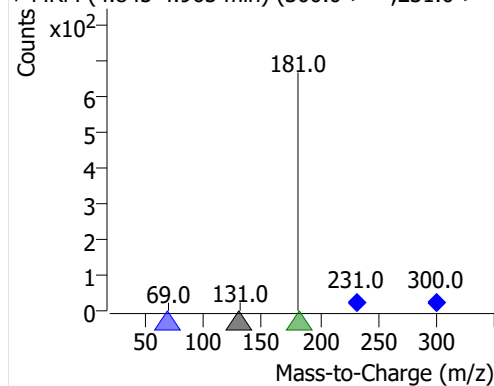
+ MRM (300.0 -> 131.0) tq010501.D



300.0 -> 131.0, 300.0 -> 69.0, 231.0 -> 181.0

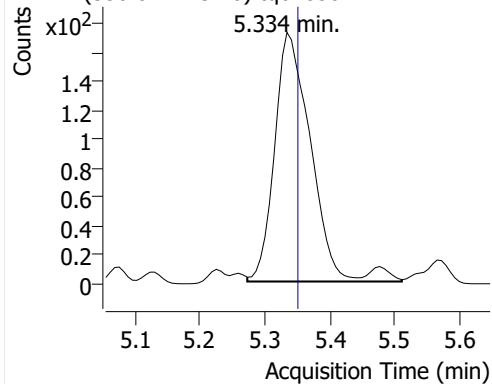


+ MRM (4.845-4.965 min) (300.0->**,231.0->**)

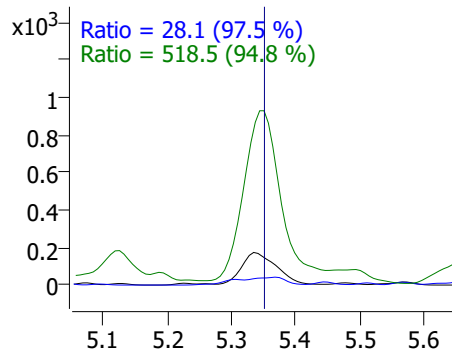


PFOA

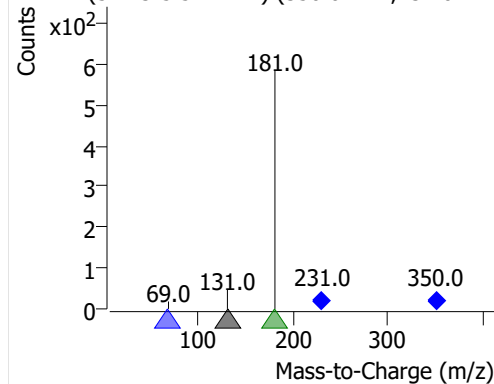
+ MRM (350.0 -> 131.0) tq010501.D



350.0 -> 131.0, 350.0 -> 69.0, 231.0 -> 181.0



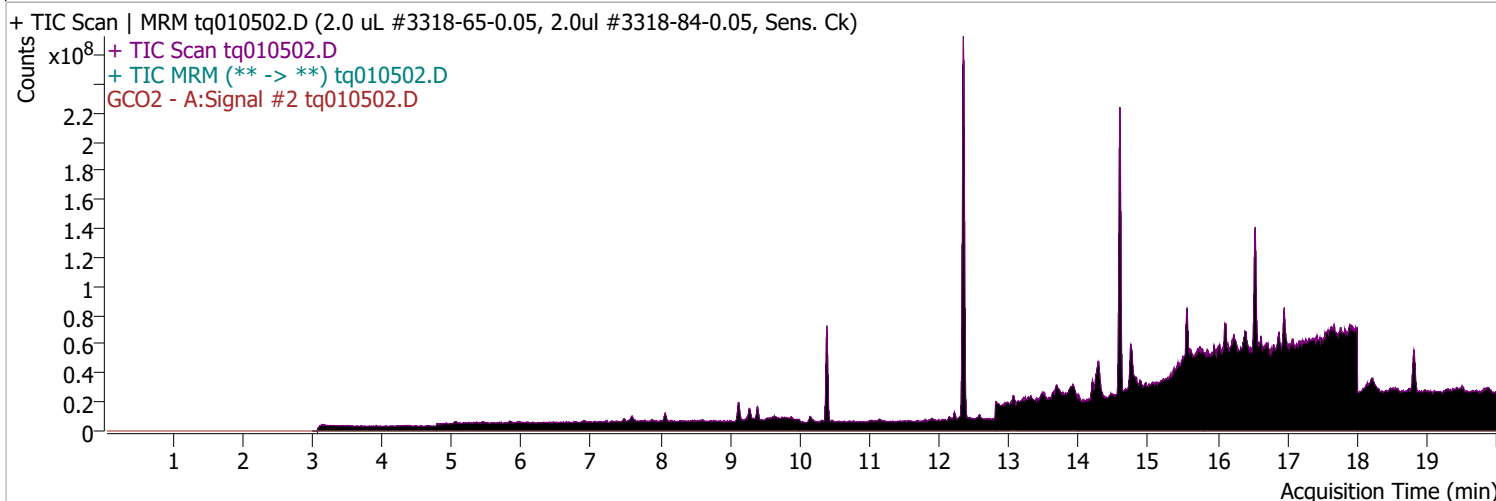
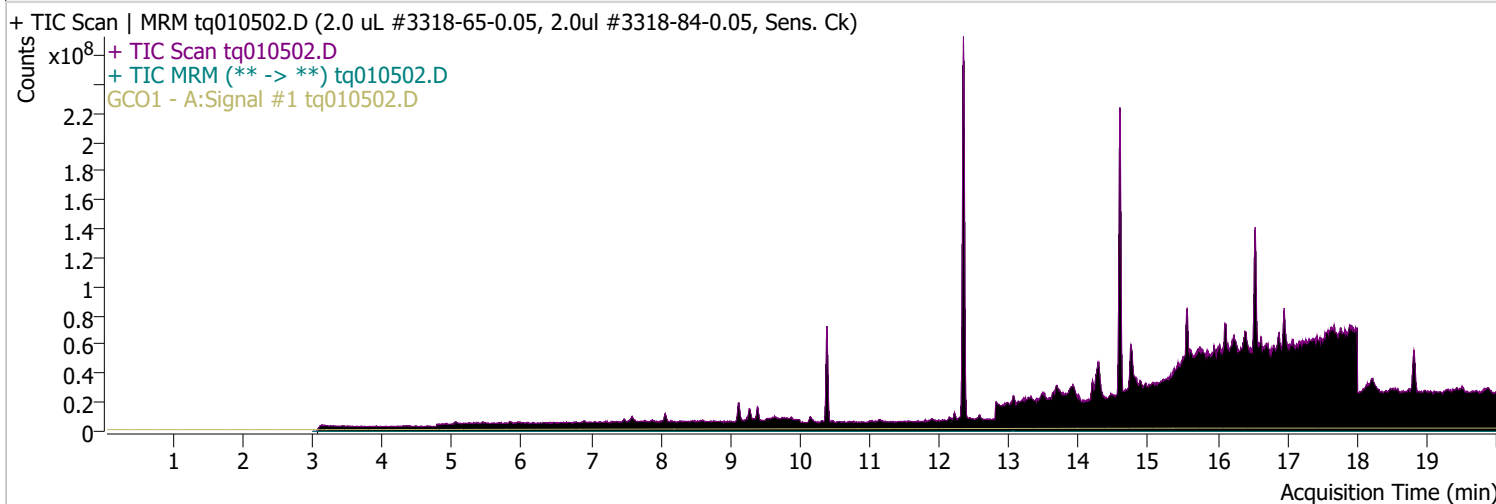
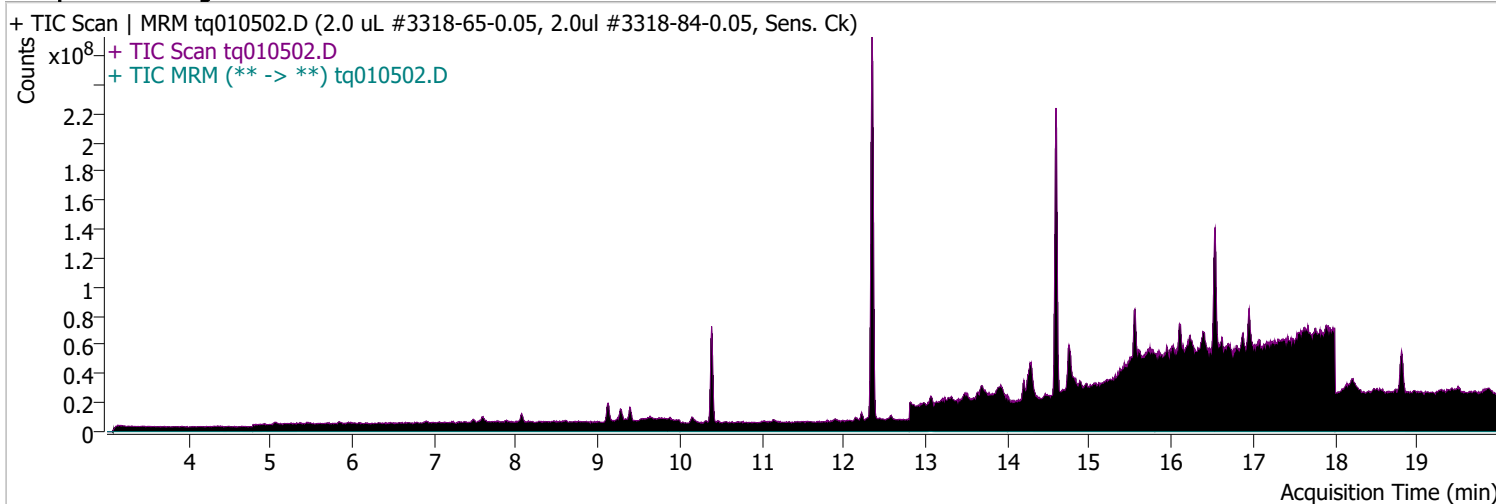
+ MRM (5.273-5.512 min) (350.0->**,231.0->**)



Quantitative Analysis Sample Report

Batch Path	D:\MassHunter\GCMS\1\data\05jan23\QuantResults\05jan23.batch.bin		
Analysis Time	1/11/2023 10:04 AM	Analyst Name	TAI\us32_usr_ins22923
Report Time	1/18/2023 2:30:11 PM	Reporter Name	TAI\us32_usr_ins22923
Last Calib Update	1/3/2023 2:39 PM	Batch State	Processed
Quant Batch Version	10.1	Quant Report Version	10.1
Acq. Time	1/5/2023 8:16 AM	Data File	tq010502.D
Sample Type	QC	Sample Name	2.0 uL #3318-65-0.05, 2.0uL #3318-84-0.05, Sens. Ck
Dilution	1	Acq. Method	tq22m1227

Sample Chromatogram

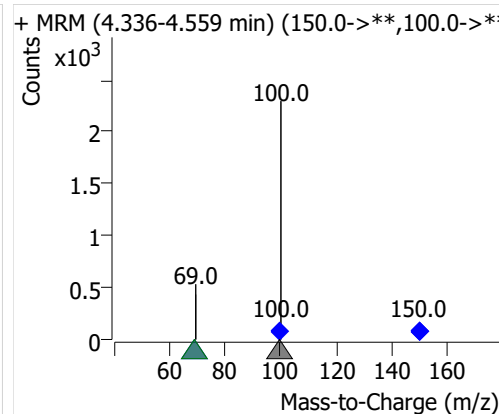
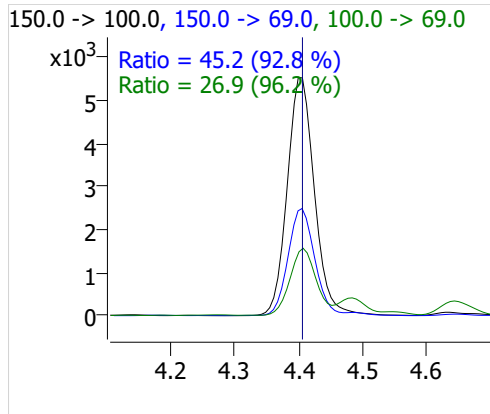
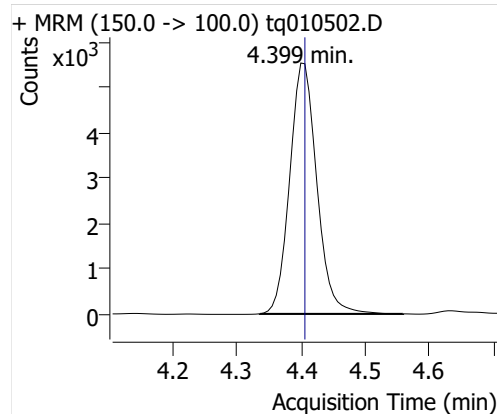


Compound	ISTD	RT	Resp.	ISTD Resp.	Resp. Ratio	Final Conc	Units
PFBA	6:2 FTOH-C13	4.399	16202	53766	0.3013	0.0899	ng

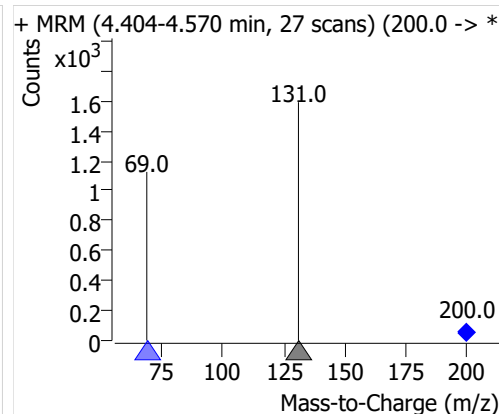
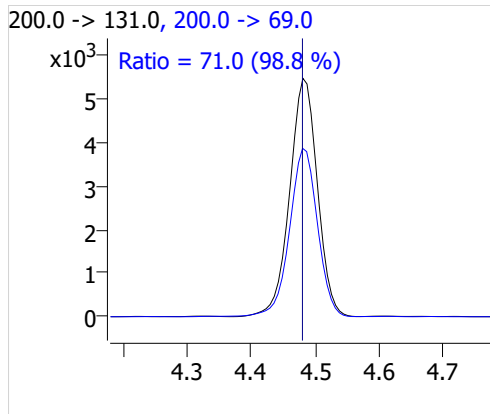
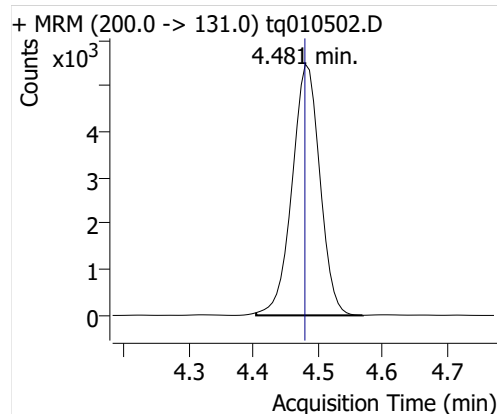
Quantitative Analysis Sample Report

Compound	ISTD	RT	Resp.	ISTD Resp.	Resp. Ratio	Final Conc	Units
PFPeA	6:2 FTOH-C13	4.481	16403	53766	0.3051	0.1026	ng
PFHxA	6:2 FTOH-C13	4.645	7329	53766	0.1363	0.0985	ng
PFHpA	6:2 FTOH-C13	4.920	4927	53766	0.0916	0.0971	ng
PFOA	6:2 FTOH-C13	5.348	3610	53766	0.0671	0.1113	ng

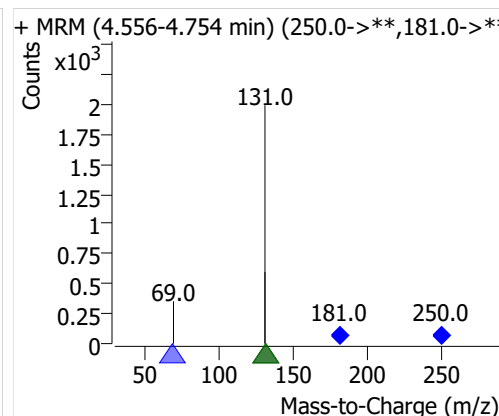
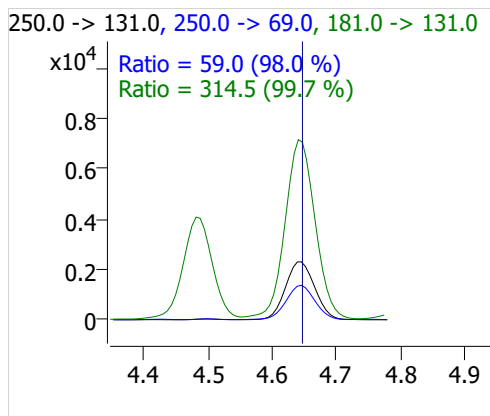
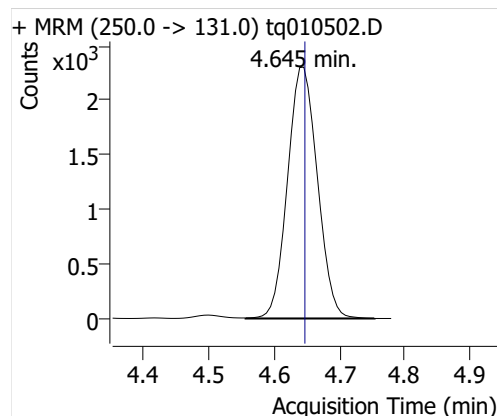
PFBA



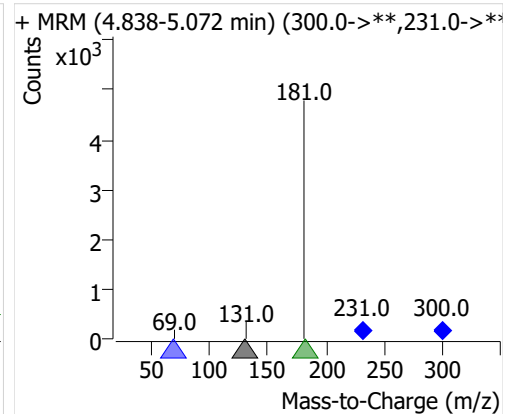
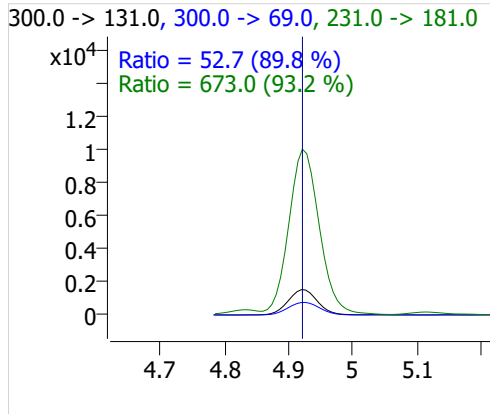
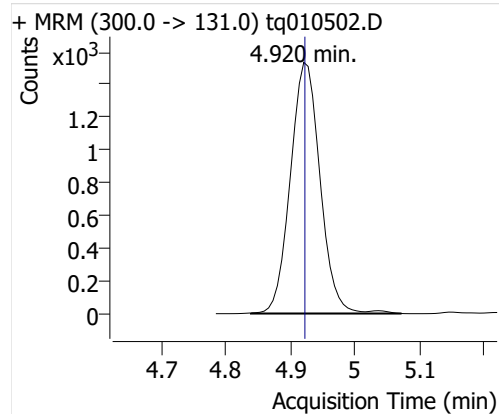
PFPeA



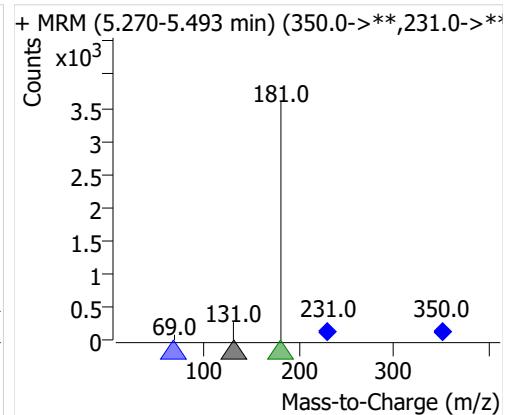
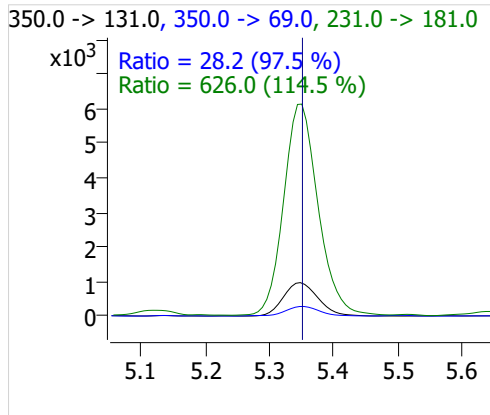
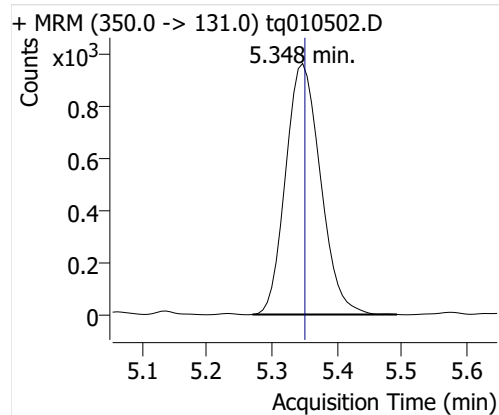
PFHxA



PFHpA



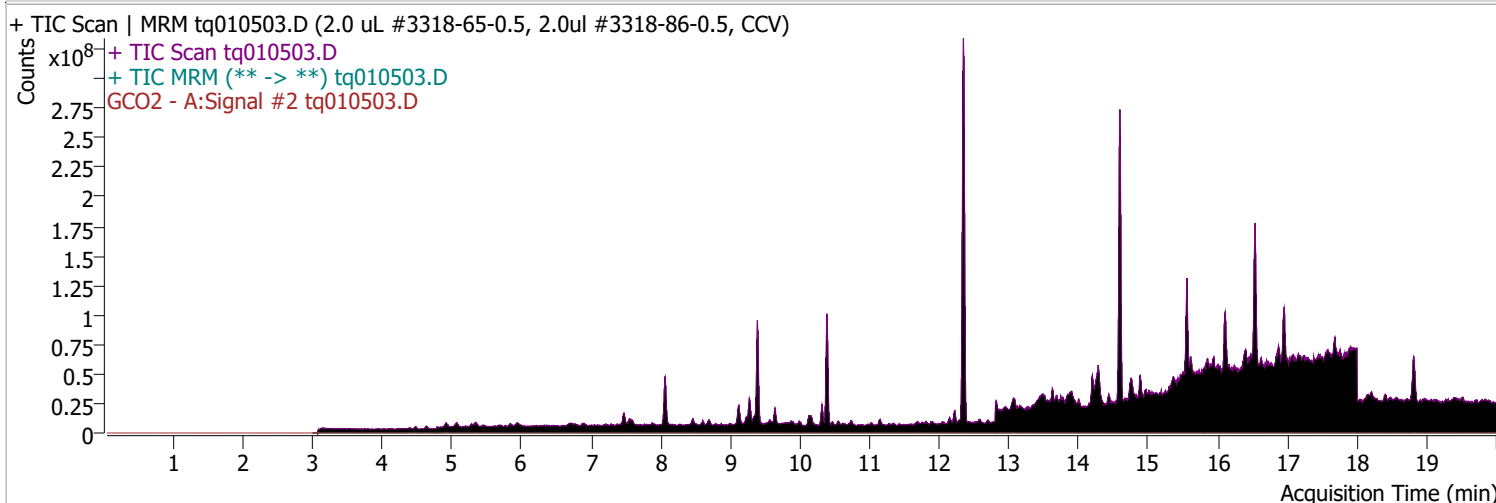
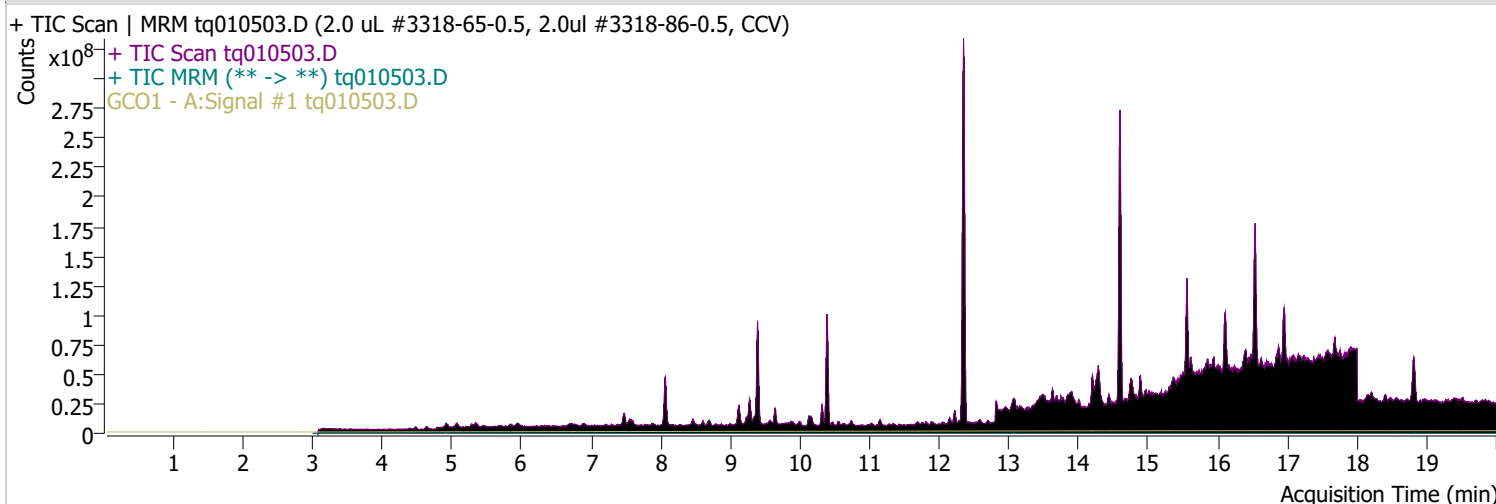
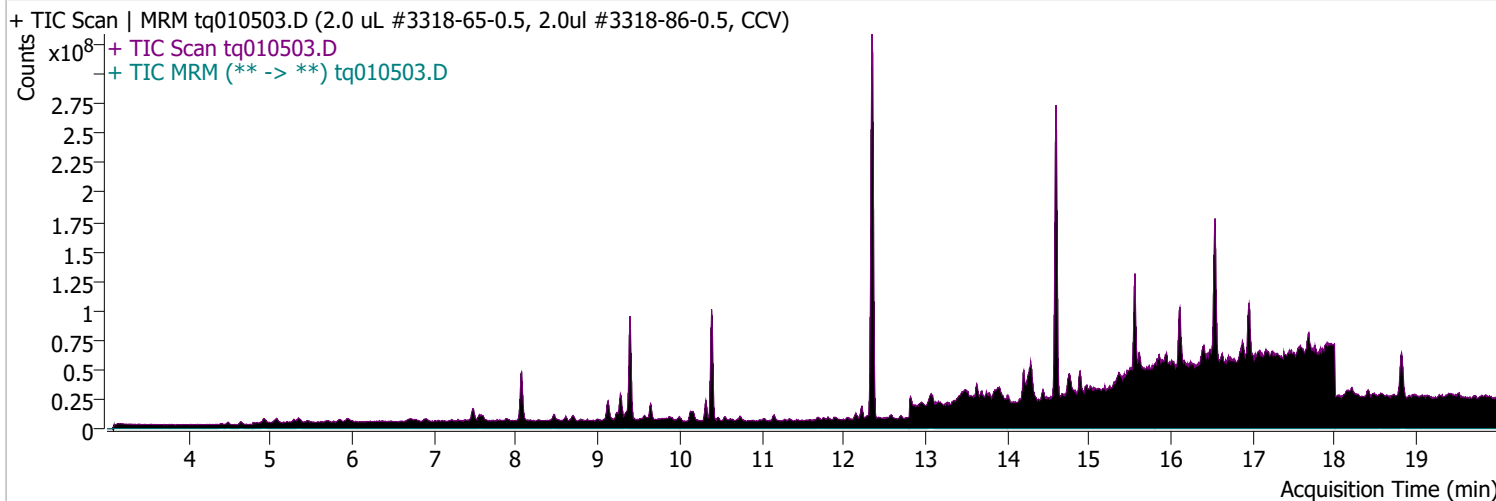
PFOA



Quantitative Analysis Sample Report

Batch Path D:\MassHunter\GCMS\1\data\05jan23\QuantResults\05jan23.batch.bin
 Analysis Time 1/11/2023 10:04 AM Analyst Name TAI\us32_usr_ins22923
 Report Time 1/18/2023 2:30:12 PM Reporter Name TAI\us32_usr_ins22923
 Last Calib Update 1/3/2023 2:39 PM Batch State Processed
 Quant Batch Version 10.1 Quant Report Version 10.1
 Acq. Time 1/5/2023 8:39 AM Data File tq010503.D
 Sample Type CC Sample Name 2.0 uL #3318-65-0.5, 2.0ul #3318-86-0.5, CCV
 Dilution 1 Acq. Method tq22m1227

Sample Chromatogram

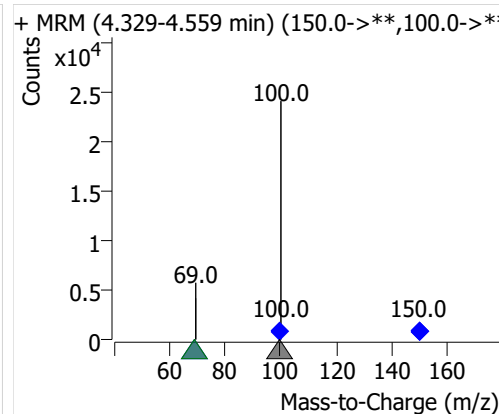
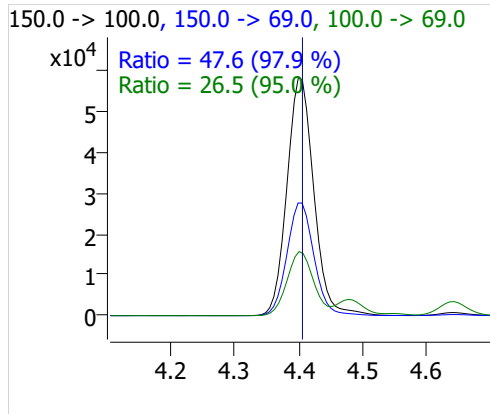
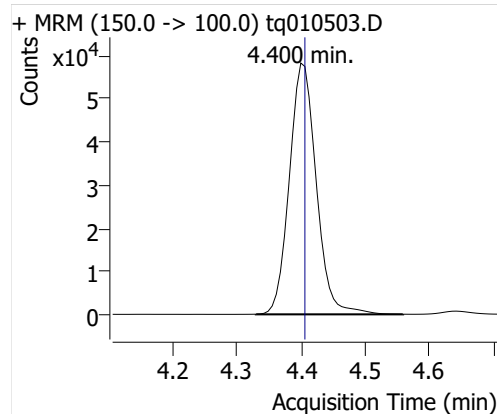


Compound	ISTD	RT	Resp.	ISTD Resp.	Resp. Ratio	Final Conc	Units
PFBA	6:2 FTOH-C13	4.400	169974	50646	3.3561	1.0015	ng

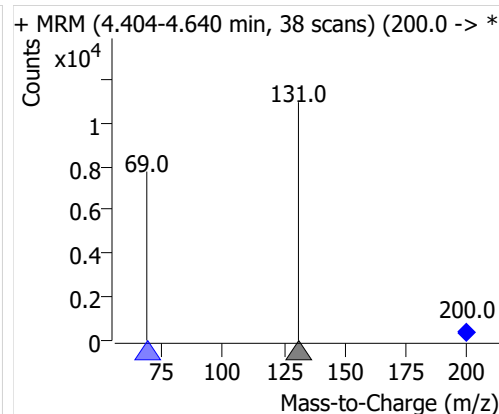
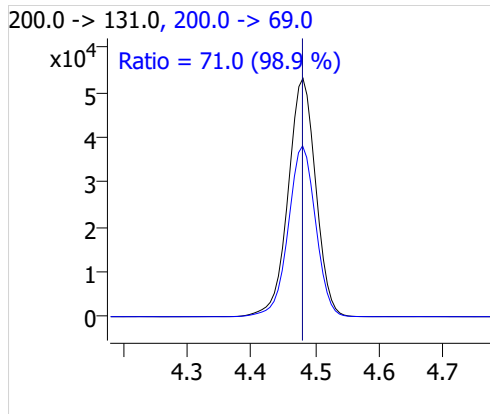
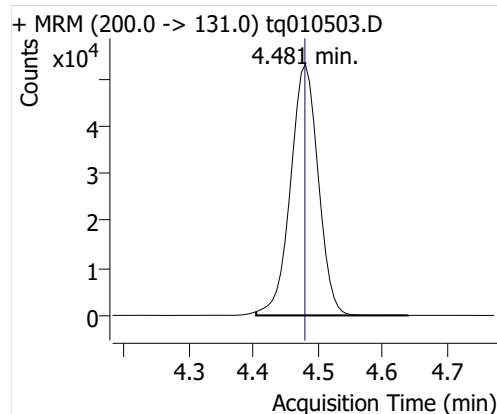
Quantitative Analysis Sample Report

Compound	ISTD	RT	Resp.	ISTD Resp.	Resp. Ratio	Final Conc	Units
PFPeA	6:2 FTOH-C13	4.481	158705	50646	3.1336	1.0540	ng
PFHxA	6:2 FTOH-C13	4.639	72364	50646	1.4288	1.0321	ng
PFHpA	6:2 FTOH-C13	4.920	46354	50646	0.9153	0.9695	ng
PFOA	6:2 FTOH-C13	5.348	28792	50646	0.5685	0.9419	ng

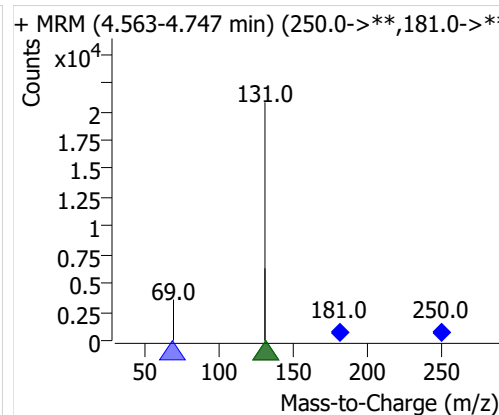
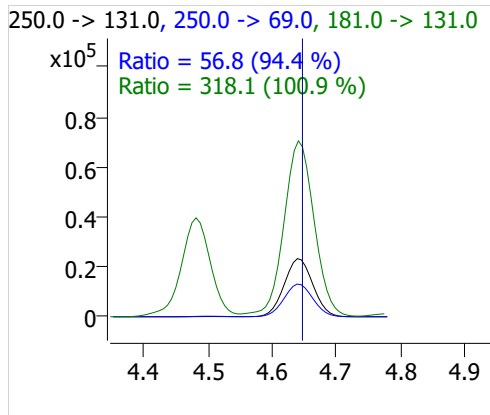
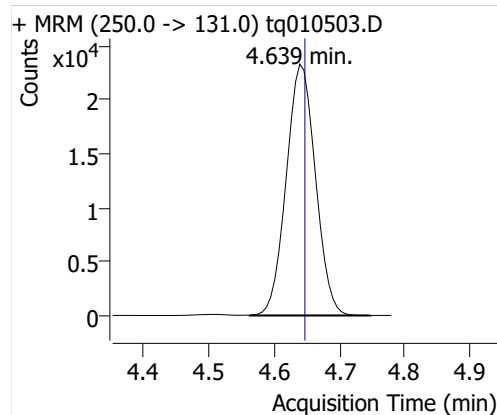
PFBA



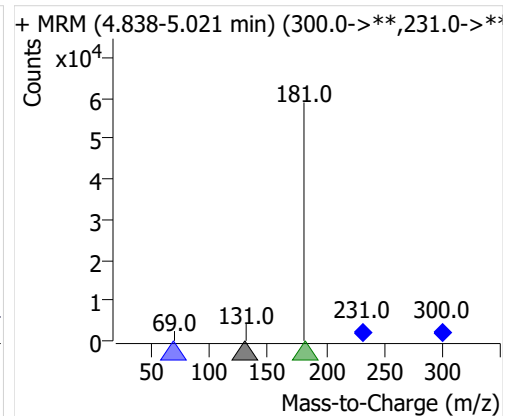
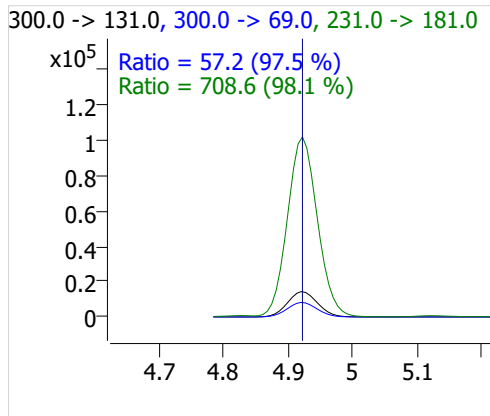
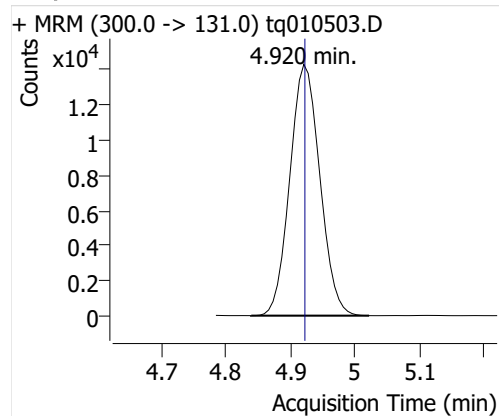
PFPeA



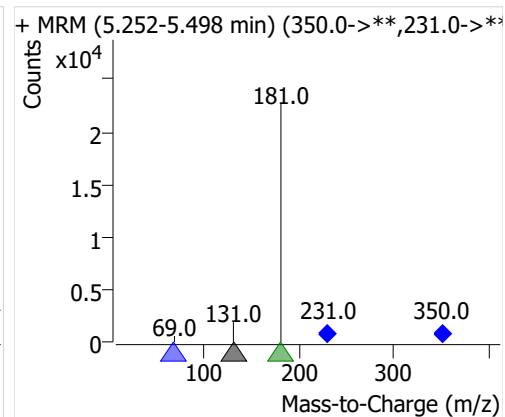
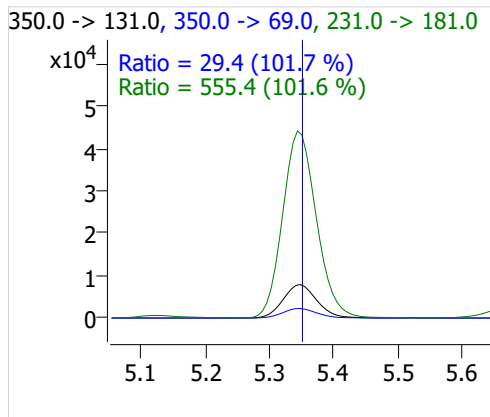
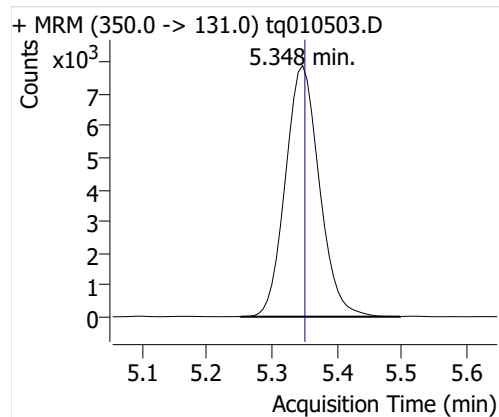
PFHxA



PFHpA



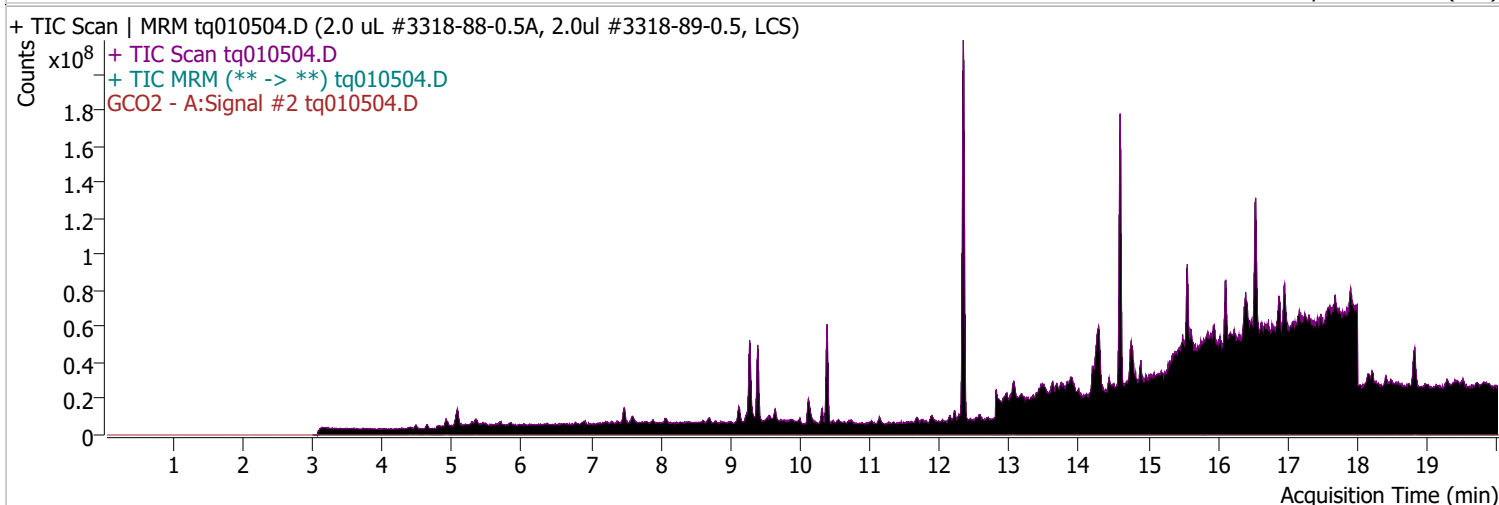
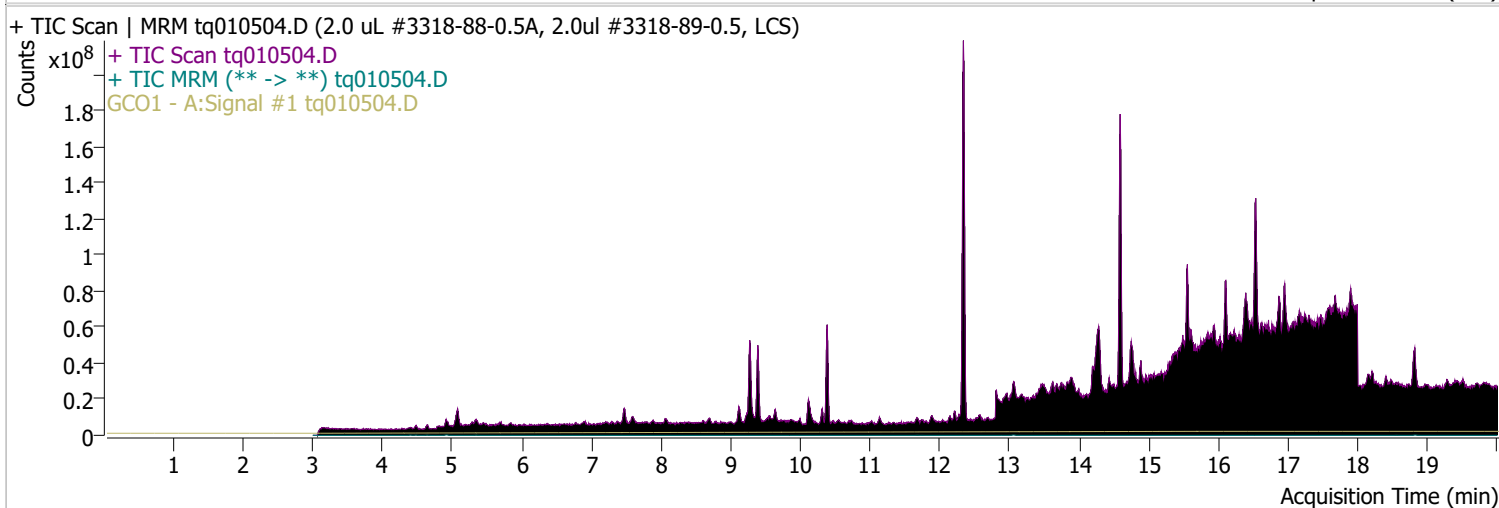
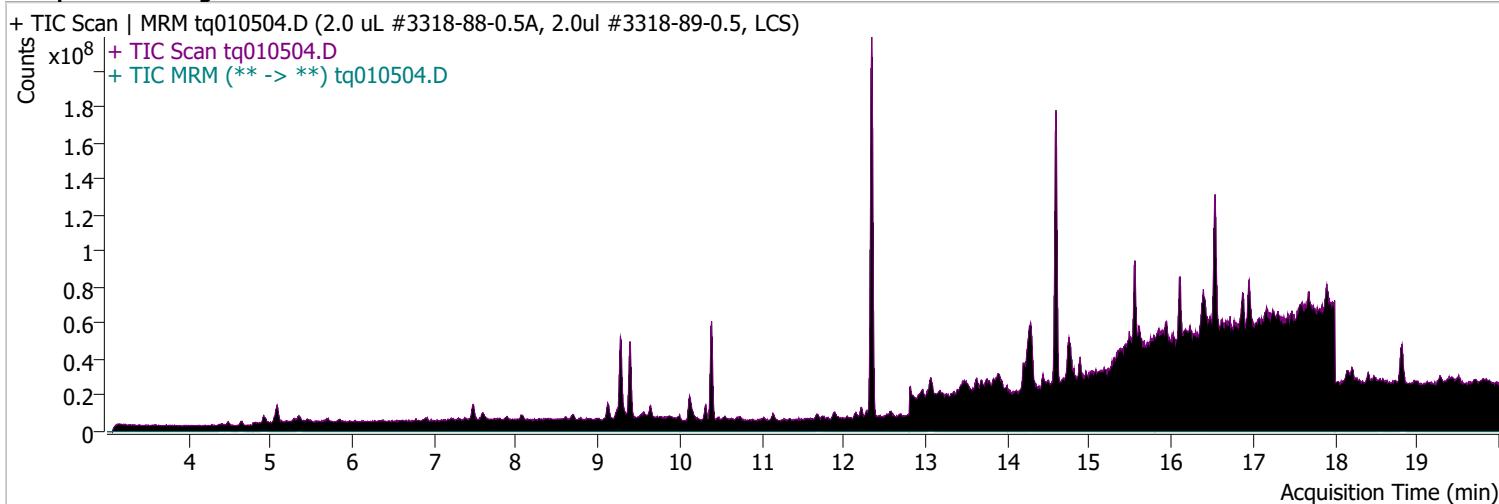
PFOA



Quantitative Analysis Sample Report

Batch Path	D:\MassHunter\GCMS\1\data\05jan23\QuantResults\05jan23.batch.bin		
Analysis Time	1/11/2023 10:04 AM	Analyst Name	TAI\us32_usr_ins22923
Report Time	1/18/2023 2:30:12 PM	Reporter Name	TAI\us32_usr_ins22923
Last Calib Update	1/3/2023 2:39 PM	Batch State	Processed
Quant Batch Version	10.1	Quant Report Version	10.1
Acq. Time	1/5/2023 9:03 AM	Data File	tq010504.D
Sample Type	QC	Sample Name	2.0 uL #3318-88-0.5A, 2.0ul #3318-89-0.5, LCS
Dilution	1	Acq. Method	tq22m1227

Sample Chromatogram

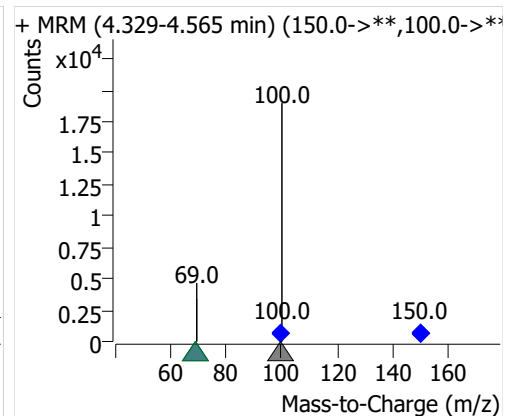
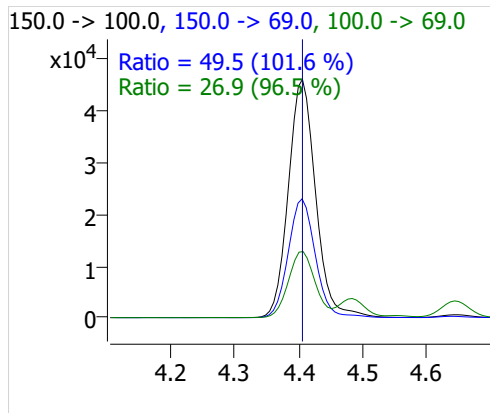
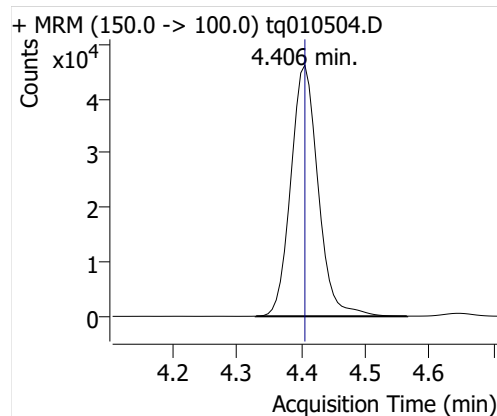


Compound	ISTD	RT	Resp.	ISTD Resp.	Resp. Ratio	Final Conc	Units
PFBA	6:2 FTOH-C13	4.406	136486	47479	2.8747	0.8579	ng

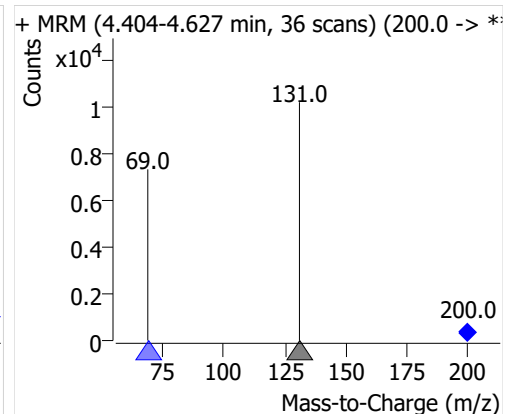
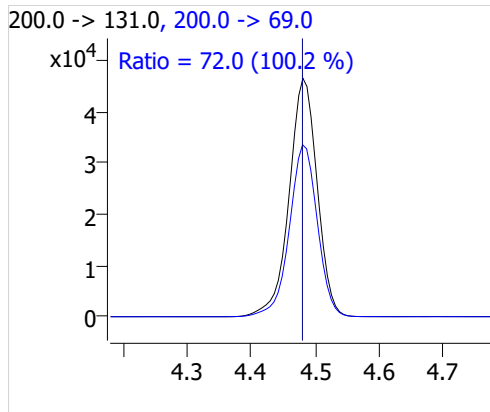
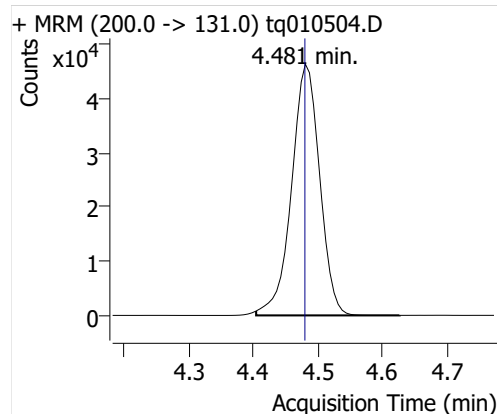
Quantitative Analysis Sample Report

Compound	ISTD	RT	Resp.	ISTD Resp.	Resp. Ratio	Final Conc	Units
PFPeA	6:2 FTOH-C13	4.481	140590	47479	2.9611	0.9960	ng
PFHxA	6:2 FTOH-C13	4.645	65060	47479	1.3703	0.9898	ng
PFHpA	6:2 FTOH-C13	4.920	41602	47479	0.8762	0.9281	ng
PFOA	6:2 FTOH-C13	5.348	24692	47479	0.5201	0.8617	ng

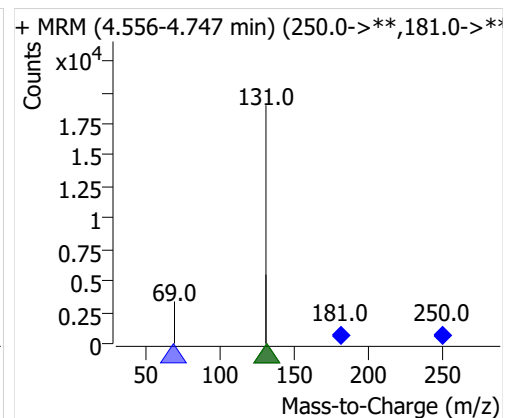
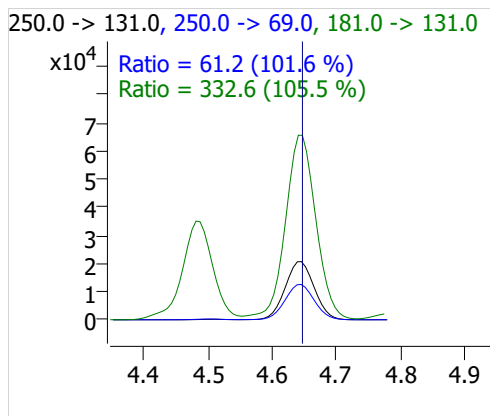
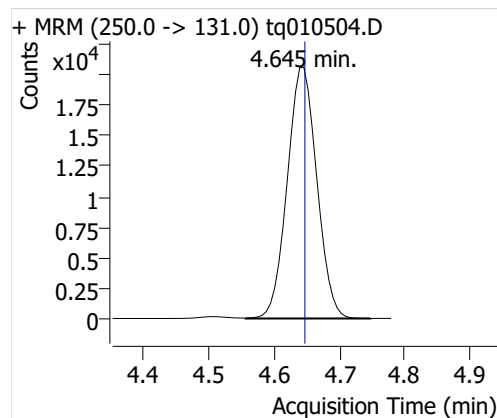
PFBA



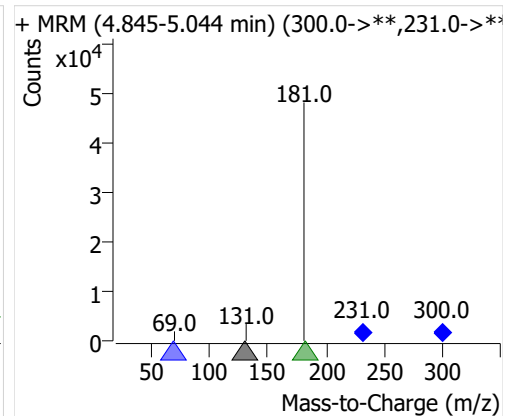
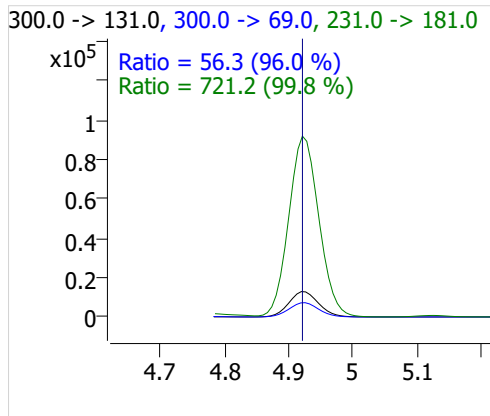
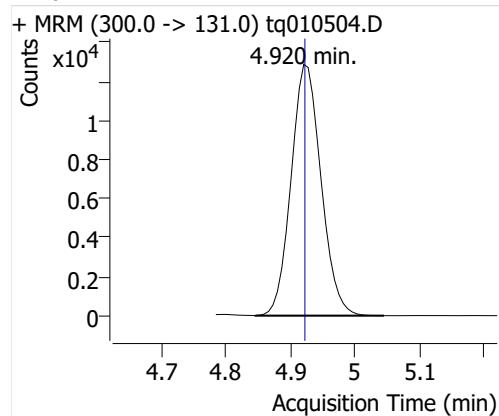
PFPeA



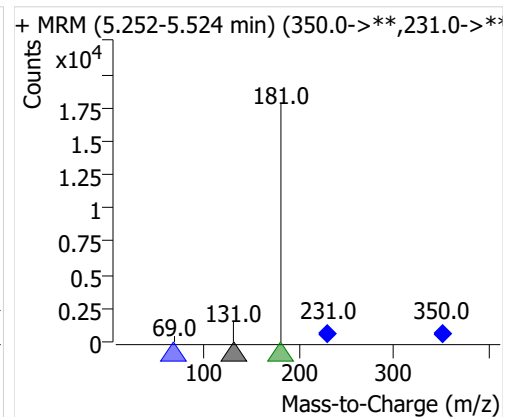
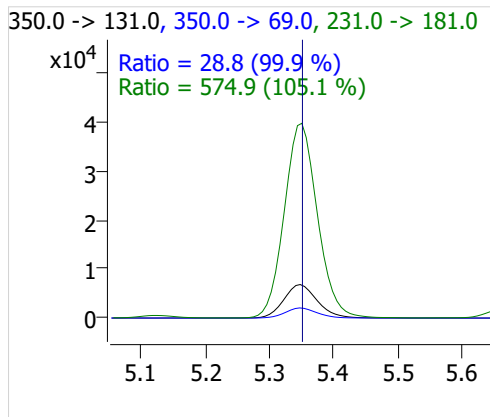
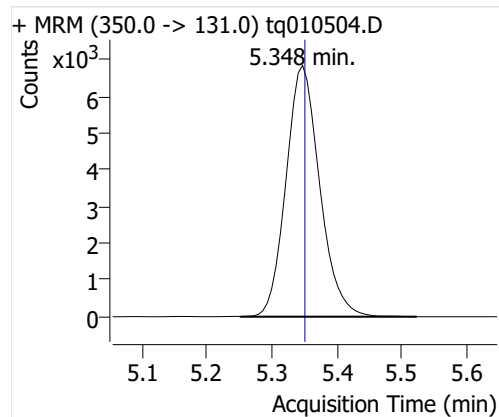
PFHxA



PFHpA



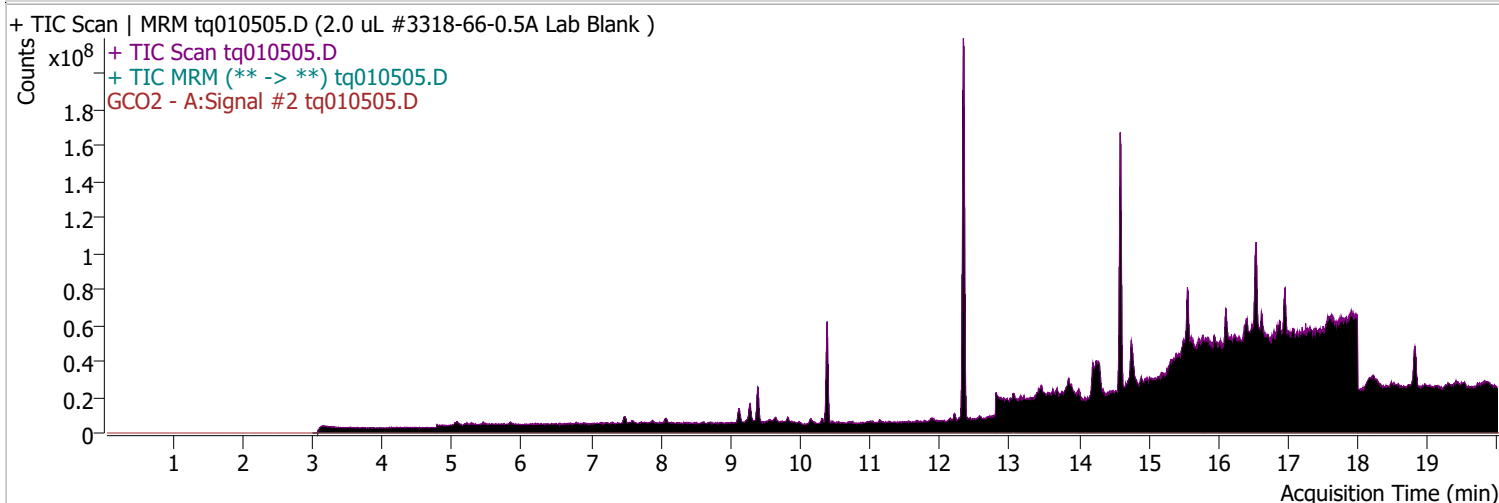
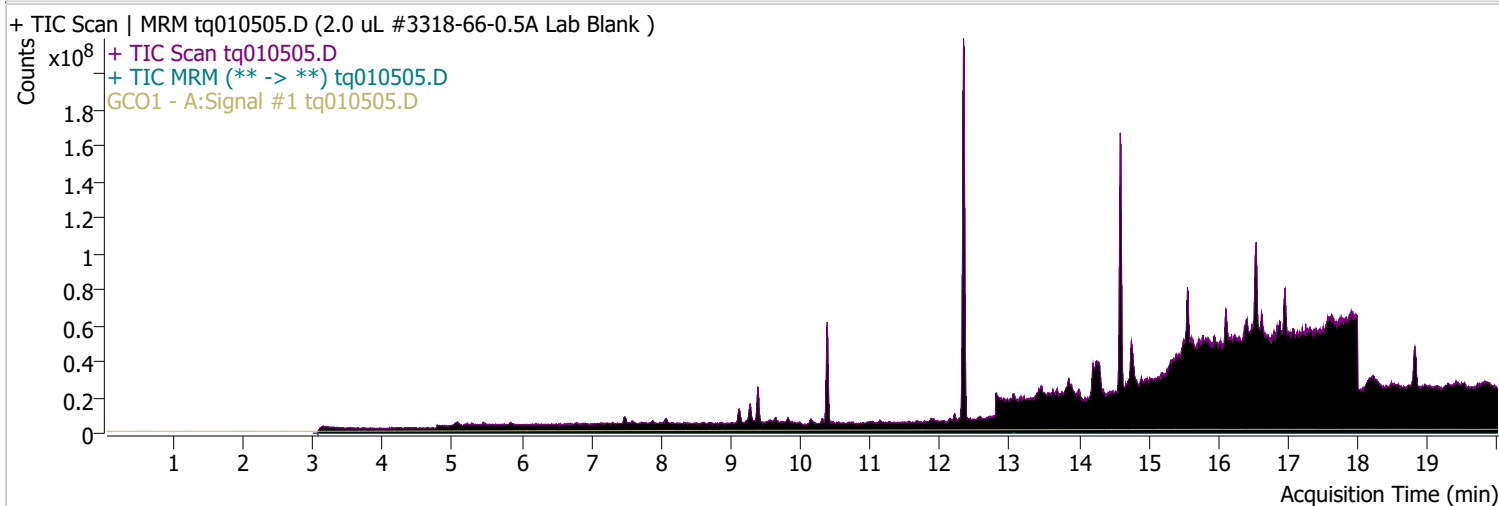
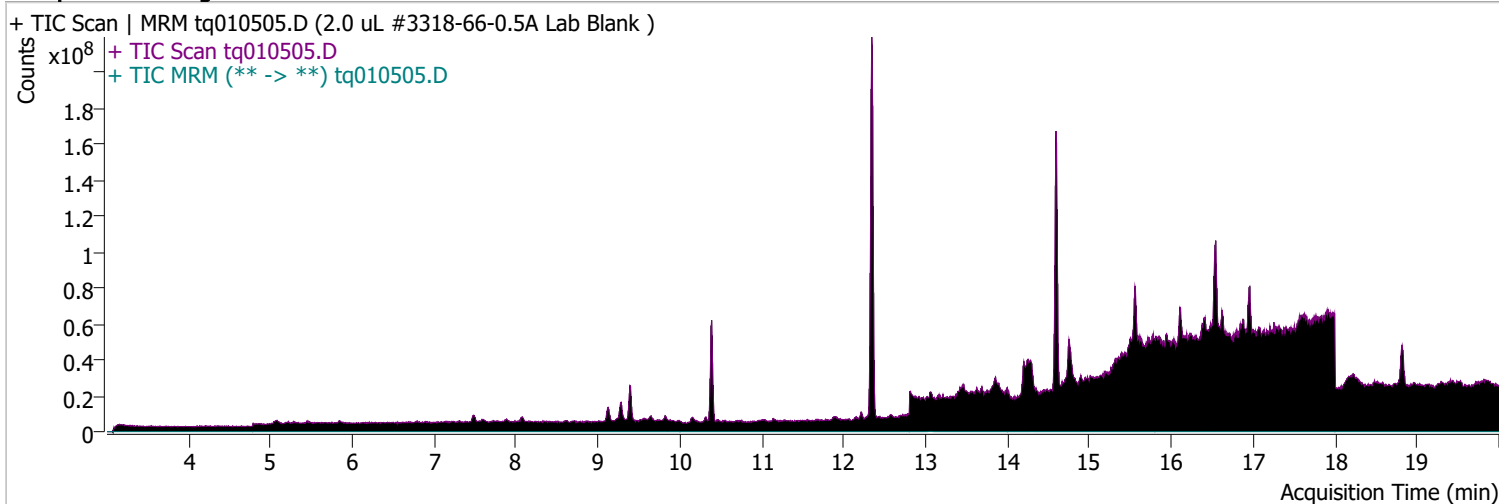
PFOA



Quantitative Analysis Sample Report

Batch Path	D:\MassHunter\GCMS\1\data\05jan23\QuantResults\05jan23.batch.bin		
Analysis Time	1/11/2023 10:04 AM	Analyst Name	TAI\us32_usr_ins22923
Report Time	1/18/2023 2:30:13 PM	Reporter Name	TAI\us32_usr_ins22923
Last Calib Update	1/3/2023 2:39 PM	Batch State	Processed
Quant Batch Version	10.1	Quant Report Version	10.1
Acq. Time	1/5/2023 9:54 AM	Data File	tq010505.D
Sample Type	Sample	Sample Name	2.0 uL #3318-66-0.5A Lab Blank
Dilution	1	Acq. Method	tq22m1227

Sample Chromatogram

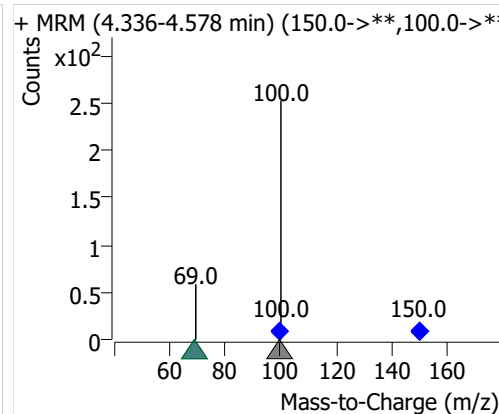
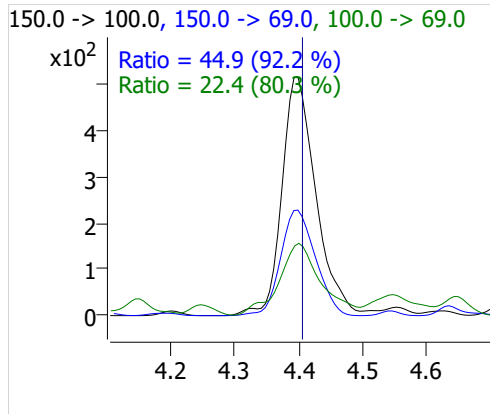
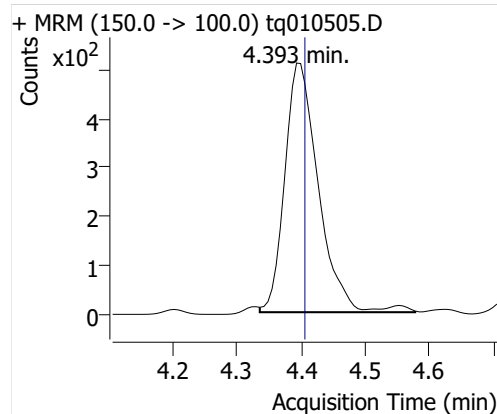


Compound	ISTD	RT	Resp.	ISTD Resp.	Resp. Ratio	Final Conc	Units
PFBA	6:2 FTOH-C13	4.393	1860	51660	0.0360	0.0107	ng

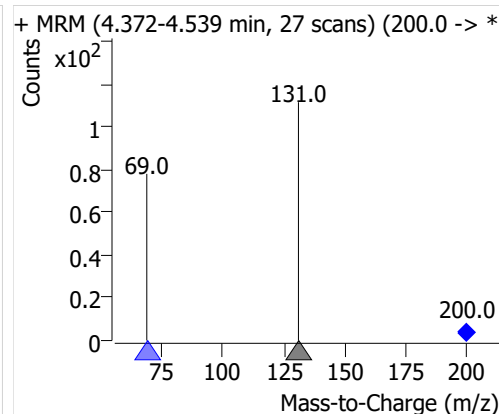
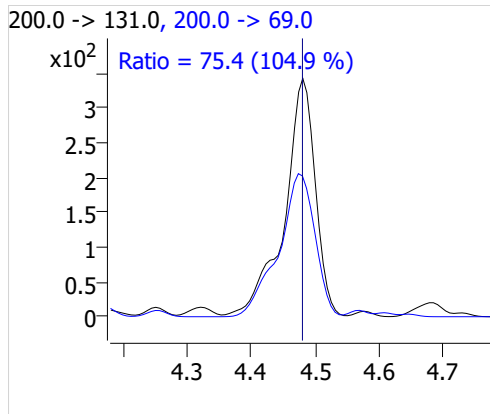
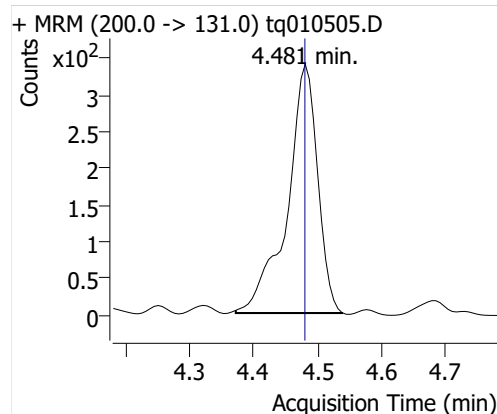
Quantitative Analysis Sample Report

Compound	ISTD	RT	Resp.	ISTD Resp.	Resp. Ratio	Final Conc	Units
PFPeA	6:2 FTOH-C13	4.481	1117	51660	0.0216	0.0073	ng
PFHxA	6:2 FTOH-C13	4.645	405	51660	0.0078	0.0057	ng
PFHpA	6:2 FTOH-C13	4.934	135	51660	0.0026	0.0028	ng
PFOA	6:2 FTOH-C13	5.348	845	51660	0.0164	0.0271	ng

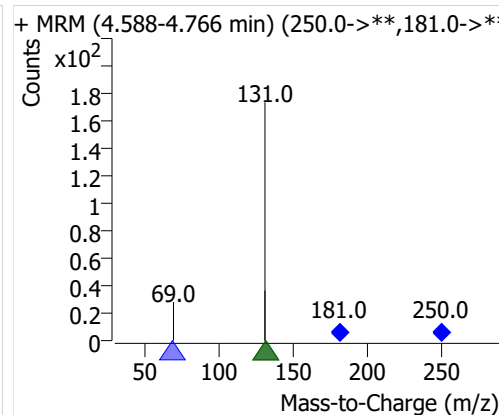
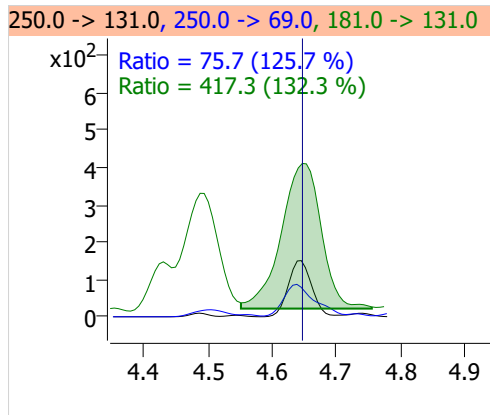
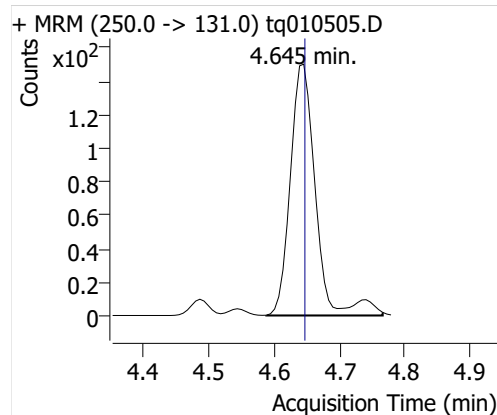
PFBA



PFPeA

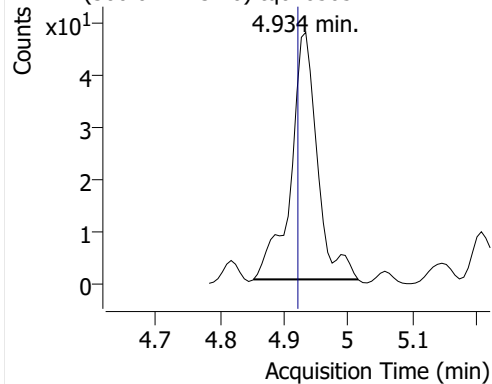


PFHxA

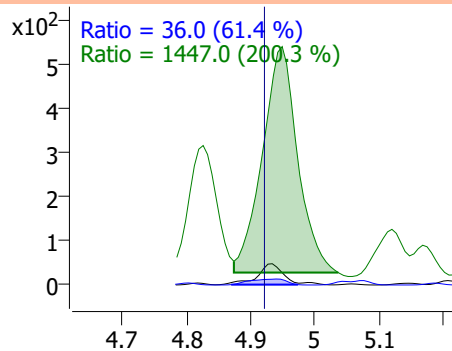


PFHpA

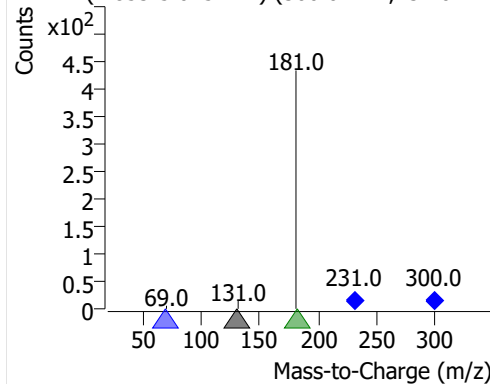
+ MRM (300.0 -> 131.0) tq010505.D



300.0 -> 131.0, 300.0 -> 69.0, 231.0 -> 181.0

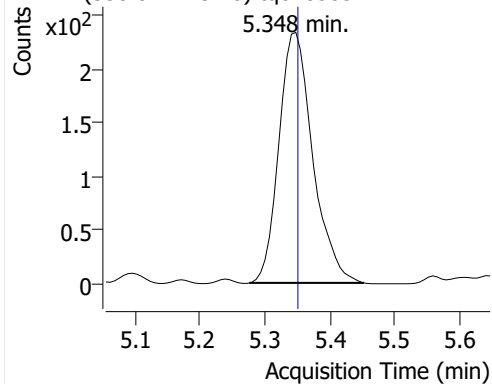


+ MRM (4.853-5.015 min) (300.0->**,231.0->**)

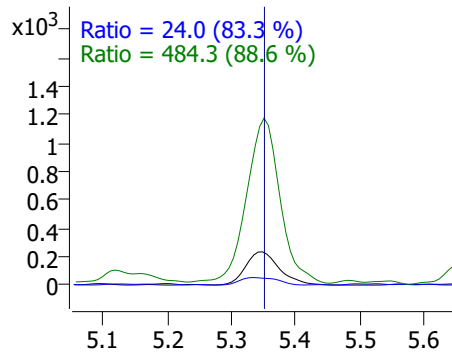


PFOA

+ MRM (350.0 -> 131.0) tq010505.D



350.0 -> 131.0, 350.0 -> 69.0, 231.0 -> 181.0



+ MRM (5.276-5.453 min) (350.0->**,231.0->**)

